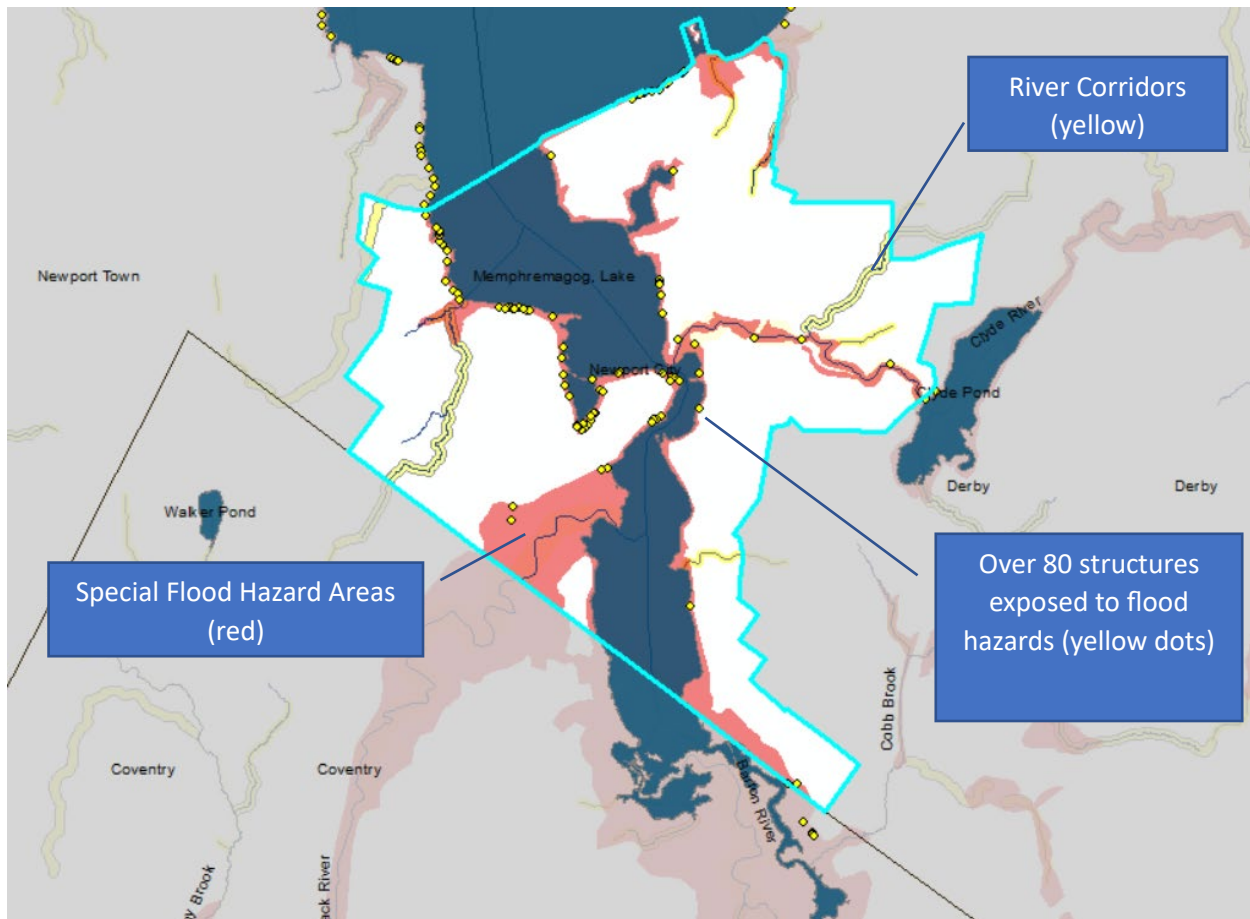


Newport City Flood Hazard Map and Bylaw Update



- **FEMA Map Update Process** – more at: bit.ly/fema-map-update
This spring, community officials will have an opportunity to review the draft flood hazard Work Maps being prepared by USGS. Community officials will be invited to a meeting to review the draft maps. This is the easiest time to identify and correct any errors.
- **Bylaw Update**
After the Work Map Meeting, we will have roughly two years for most communities to update their flood hazard bylaws before the Prep Deadline for Orleans County in Summer 2025.
- **Model Bylaws are Available** bit.ly/model-regulations
 - The models meet or exceed requirements for the National Flood Insurance Program;
 - Avoid losses of remaining river corridor and floodplain functions;
 - Reduce the risk of disaster for families, friends, and the community;
 - Support community co-benefits including clean water, habitat, and recreation;

- Support flood resilience and the highest level of reimbursement from [ERAF](#) after disasters; and are consistent with the municipal flood resilience plans, Vermont Hazard Mitigation Plan, Act 250, Section 248, the Flood Hazard and River Corridor Rule, and other communities
- **Key Elements of the Vermont [No Adverse Impact Standards](#)** bit.ly/model-regulations
 1. **Room for Rivers** – Within the River Corridor don't build closer to the river or stream bank than what is already there. River Corridors identify the space needed by the channel to allow channels to adjust over time and maintain their least erosive and damaging path and floodplain functions.
 2. **No Net Fill** in Special Flood Hazard Areas – Protect the space needed to reduce flood heights and power, to allow sediments and phosphorus to build floodplain soils, and to not pollute the lake.
 3. **Lowest Floor Elevations** of new or Substantially Improved structures to be elevated to at least 2' above the flood level.
 4. **Substantial Improvement** defined as cumulative over 3 years.

For Assistance

- **Northeastern Vermont Development Association** nvda.net
Alison Low alow@nvda.net
- **VT DEC River Corridor and Floodplain Protection Program** bit.ly/flood-manager
Sacha.Pealer@vermont.gov Ned.Swanberg@vermont.gov

Additional Information

- Map and Bylaw Update Information: bit.ly/fema-map-update
- www.FloodReady.vt.gov with [Community Reports](#)
- Model No Adverse Impact bylaws bit.ly/model-regulations
- Current FEMA Flood Insurance Rate Maps msc.fema.gov/portal/home
- Current ANR River Corridor Maps bit.ly/flood-atlas
- [Flood Hazard Resources for Planning Commissions and Select Boards](#)
- [Room for Rivers \(What is a River Corridor?\)](#)
- [Safe Family and Friends](#)
- [Emergency Relief and Assistance Fund ERAF](#) bit.ly/vt-eraf